



### Our Delivered Projects:



Spring Meadows, Gr. Noida



Sadar Bazaar, Gr. Noida

### Ongoing



Spring Homes, Gr. Noida West



**SUBLIME REALTECH PRIVATE LIMITED**

**Site Office: GH-03B, Sector-12, Greater Noida (West), Gautam Buddha Nagar, Uttar Pradesh, 201306**

**RERA Reg. No.: UPRERAPRJ274689 • GSTIN: 09AAVCS7749C1ZN**

\*Conditions apply. **DISCLAIMER** : All buildings, information, specification, etc. are tentative and subject to variation and modification by the company or the competent authorities sanctioning such plans. Images are for representative purpose only. \*1 sq. mtr. is equal to 10.76 sq. ft. Note: The details of approvals may be seen in our office.

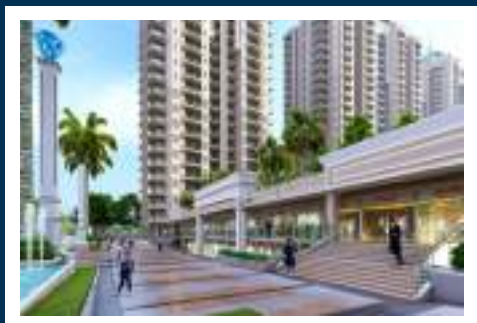




SPRING  
**ELMAS**  
*shine bright*

Greater Noida (West) have a well-planned neighbourhood and pocket-friendly market with a variety of developer's options. For potential purchasers, Greater Noida (West) is the most desirable location. As a result, the Greater Noida (West) Real Estate Market has attracted major companies. Greater Noida (West) is seeing a lot of building big brands and making this location a prime location.

Experience the difference of living in a universe of your own devoted to your aspirations. Spring Elmas, premium 3 & 4 BHK & Duplex residential project from Spring Group, are homes that promise to multiply your joy like never before. With complete serenity and comfort, these beautiful and luxurious modern homes offer vast open space with lush green surrounding, leisure amenities and a lot more good things to surprise you everyday. Being strategically located, Spring Elmas offers easy accessibility and connectivity, ensuring that the world around you is really closer. So enjoy staying at an unbeatable location that is your own universe.





# SPECIFICATIONS

## BALCONY

**Floor:** Ceramic tiles ISI Mark  
**Walls:** Permanent Finish  
**Ceiling:** Paint with Base putty

## STUDY/ SERVANT ROOM

**Floor:** Vitrified/ Ceramic Tiles  
**Walls:** Permanent Finish Fixture & fitting : Switches ISI  
**Ceiling:** POP Cornice/ Paint with Base Putty partly false ceiling

## BED ROOM

**Floor:** Vitrified tiles  
**External Doors & Windows:** UPVC  
**Fixture & fitting :** Switches ISI  
**Walls:** OBD Paint ISI Mark  
**Main Door:** Hard wood Frame & Skin Moulded Paneled door / Flush door shutters  
**Ceiling:** POP Cornice/ Paint with Base Putty partly false ceiling

## TOILET

**Floor:** Anti Skid Vitrified Tiles ISI Mark  
**External Doors & Windows:** UPVC  
**Fixture & fitting :** Switches ISI & Standard Chinaware fixture & fitting for geyser water supply (CP fittings ISI Mark)  
**Walls:** OBD Paint ISI Mark  
**Main Door:** Hard wood Frame & Skin Moulded Paneled door / Flush door shutters  
**Ceiling:** POP Cornice/ Paint with Base Putty partly false ceiling

## KITCHEN

**Floor:** Anti Skid Vitrified Tiles ISI Mark  
**External Doors & Windows:** UPVC  
**Fixture & fitting :** Udaipur Green  
Marble Top Counter & fitting for R.O System & Geyser Water supply fittings ISI Mark  
**Walls:** OBD Paint ISI Mark  
**Main Door:** Hard wood Frame & Skin Moulded Paneled door / Flush door shutters  
**Ceiling:** POP Cornice/ Paint with Base Putty partly false ceiling  
**Utility:** Single Sink stainless steel ISI Standard

## DRAWING ROOM

**Floor:** Vitrified Tiles ISI Mark  
**External Doors & Windows:** UPVC  
**Fixture & fitting :** Switches ISI  
**Walls:** OBD Paint ISI Mark  
**Main Door:** Hard wood Frame & Skin Moulded Paneled door / Flush door shutters  
**Ceiling:** POP Cornice/ Paint with Base Putty partly false ceiling

## MASTER BEDROOM

**Floor:** Wooden laminated  
**External Doors & Windows:** UPVC  
**Fixture & fitting :** Switches ISI  
**Walls:** OBD Paint ISI Mark  
**Main Door:** Hard wood Frame & Skin Moulded Paneled door / Flush door shutters  
**Ceiling:** POP Cornice/ Paint with Base Putty partly false ceiling

## LIFT/LOBBY

**Floor:** Combination of different colors marble/ stone in pattern  
**Walls:** Granite tiles cladding & Texture Paint  
**Ceiling:** Paint with Base putty





Yatharth Hospital



Near Metro Station, Sector 76, Noida



NH-24



Fortis Hospital Sector-62, Noida

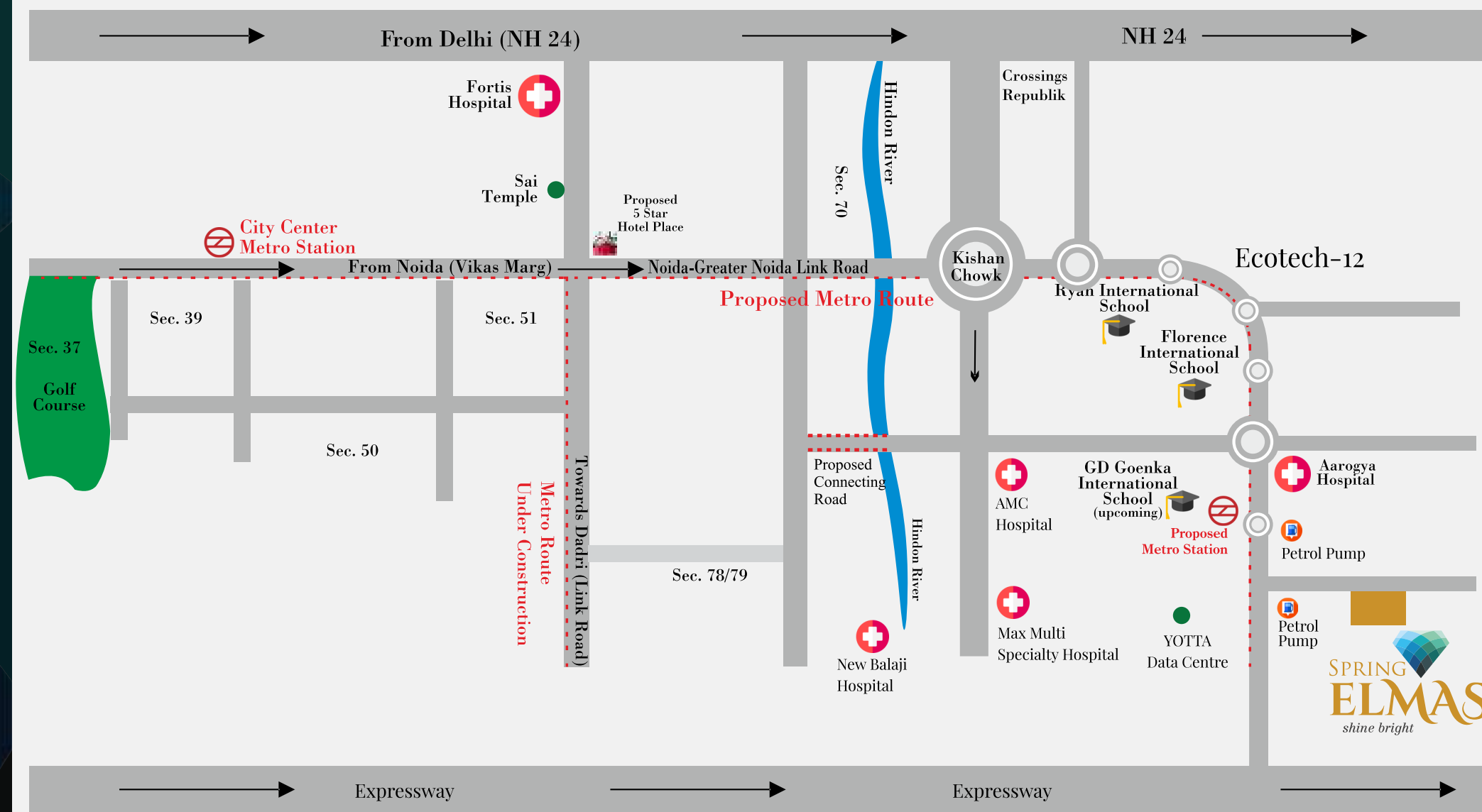
Spring Elmas is located at Greater Noida (West) and enjoys easy access from delhi NCR. A number of schools, hospitals and malls are within a short driving distance. The Proposed metro strengthens the connectivity further to the rest of the places.



### Location Advantages:

- 200 meter distance from proposed metro
- 10 Minutes drive to FNG Expressway
- 5 Minutes drive to Yatharth Hospital
- 5 Minutes drive from Sai Mandir
- 10 Minutes drive to NH-24
- 5 Minutes drive to city center mall at kisan chawk
- 10 Minutes drive to the nearest metro station in Sector 76
- 15 Minutes drive to Fortis Hospital and Kailash Hospital
- Army Golf Club just 2 km away

## Location Map

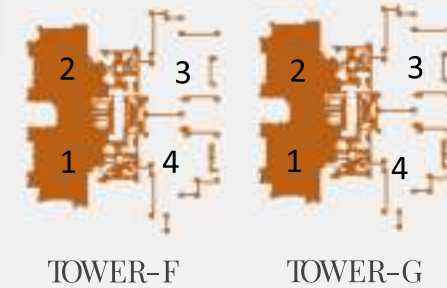
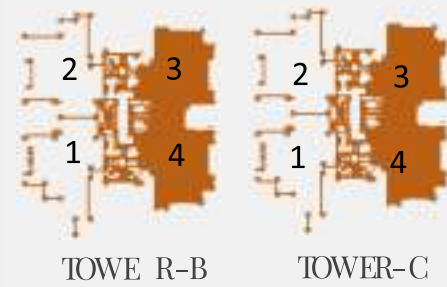
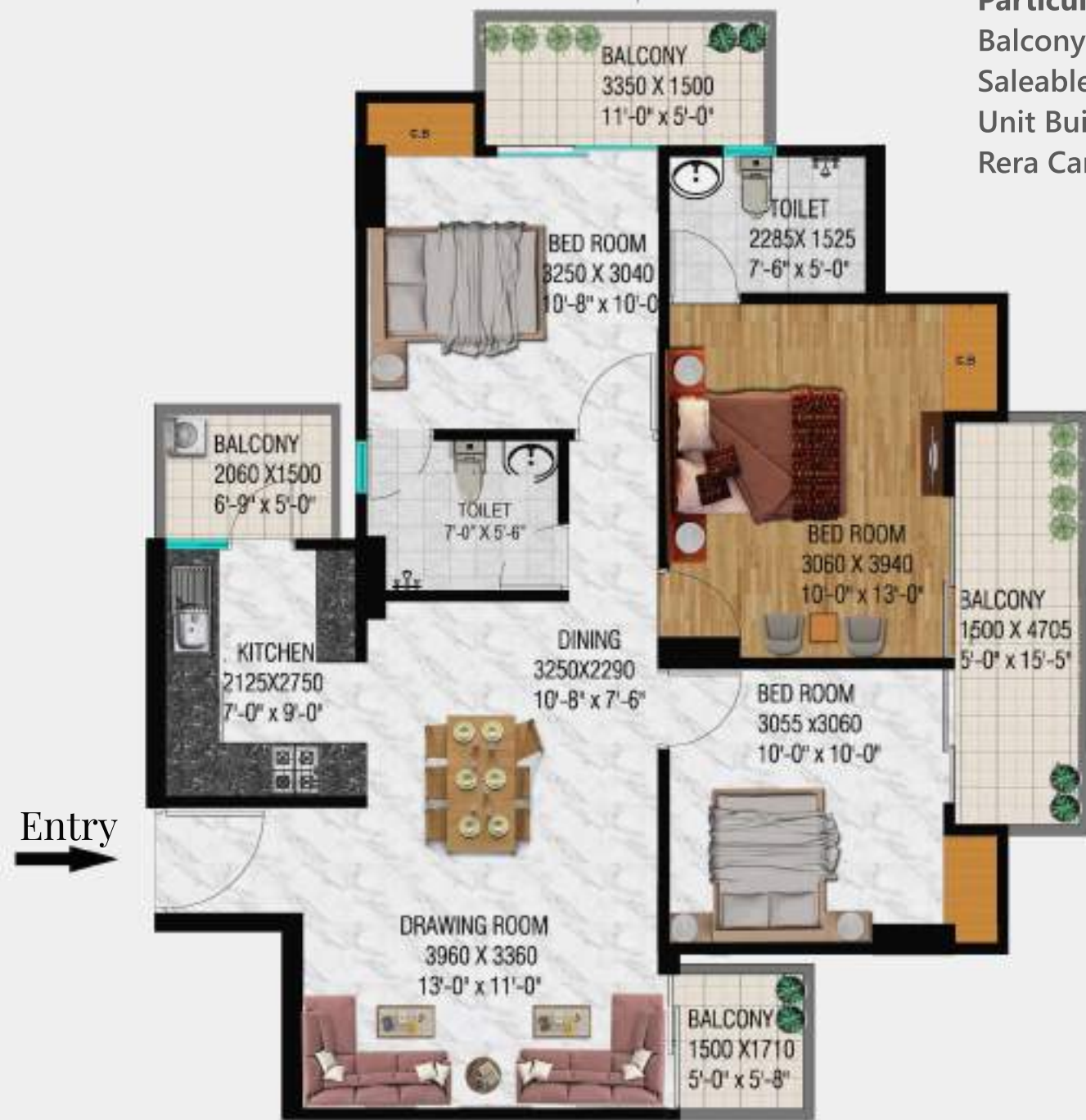


Map Not to scale

# Unit Plan : 1355

**TOWER-B,C,F,G**  
**UNIT PLAN - TYPE -6**  
**3 BHK + 2T**

<b>Particulars</b>	:	<b>Sq.ft.</b>
Balcony Area	:	193.78 sq.ft.
Saleable Area	:	1355 sq.ft.
Unit Built up Area	:	1039.35 sq.ft.
Rera Carpet Area	:	793.46 sq.ft.

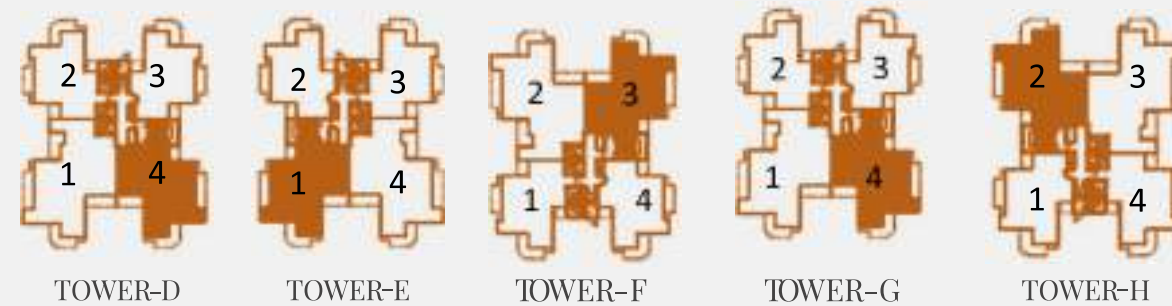
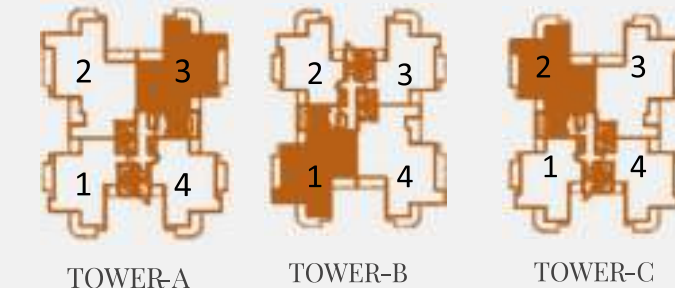


Note : Sizes In Feet/inches Are Approximate

# Unit Plan: 1580

**TOWER-A, B, C, D, E, F, G, H**  
**UNIT PLAN - TYPE -5**  
**3 BHK + 3T**

<b>Particulars</b>	:	<b>Sq.ft.</b>
Balcony Area	:	223.13 sq.ft.
Saleable Area	:	1580 sq.ft.
Unit Built up Area	:	1200.66 sq.ft.
Rera Carpet Area	:	919.28 sq.ft.

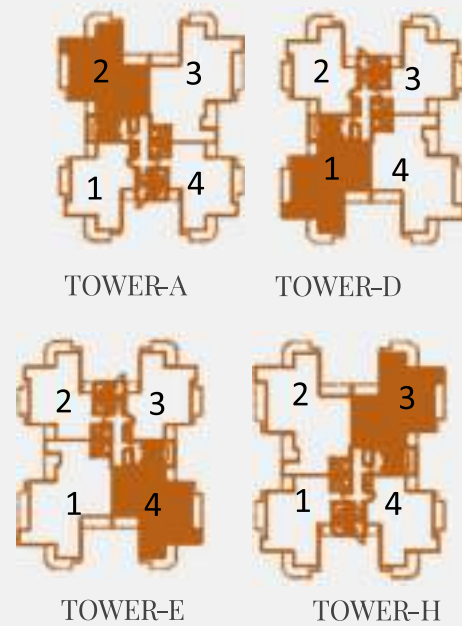


Note : Sizes In Feet/inches Are Approximate

# Unit Plan: 1600

**TOWER-A,D,E,H**  
**UNIT PLAN - TYPE -3**  
**3 BHK + 3T**

<b>Particulars</b>	<b>:</b>	<b>Sq.ft.</b>
Balcony Area	:	223.13 sq.ft.
Saleable Area	:	1600 sq.ft.
Unit Built up Area	:	1210.74 sq.ft.
Rera Carpet Area	:	929.42 sq.ft.

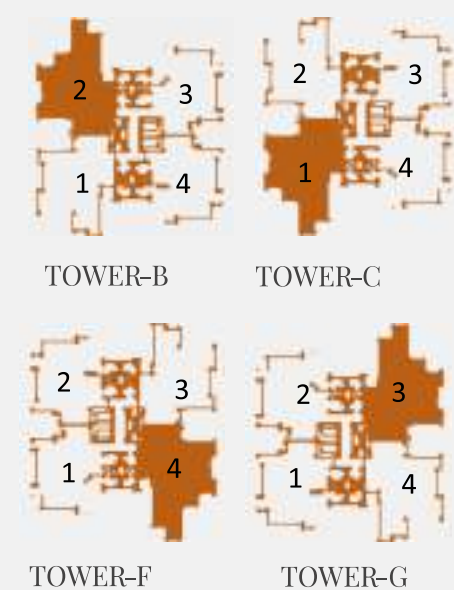
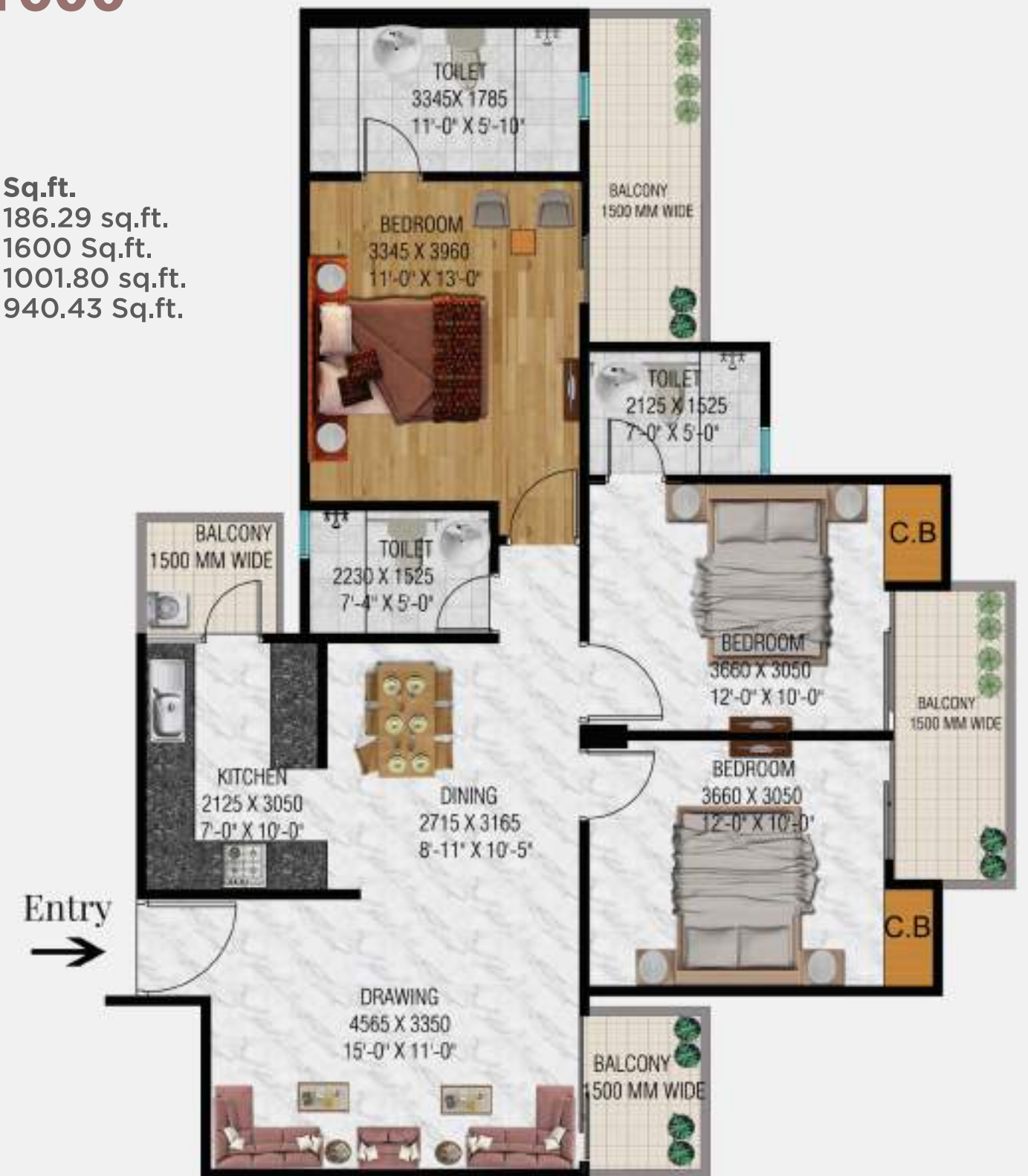


Note : Sizes In Feet/inches Are Approximate

# Unit Plan: 1600

**TOWER-B,C,F, G**  
**UNIT PLAN - TYPE -4**  
**3 BHK + 3T**

<b>Particulars</b>	<b>:</b>	<b>Sq.ft.</b>
Balcony Area	:	186.29 sq.ft.
Saleable Area	:	1600 Sq.ft.
Unit Built up Area	:	1001.80 sq.ft.
Rera Carpet Area	:	940.43 Sq.ft.

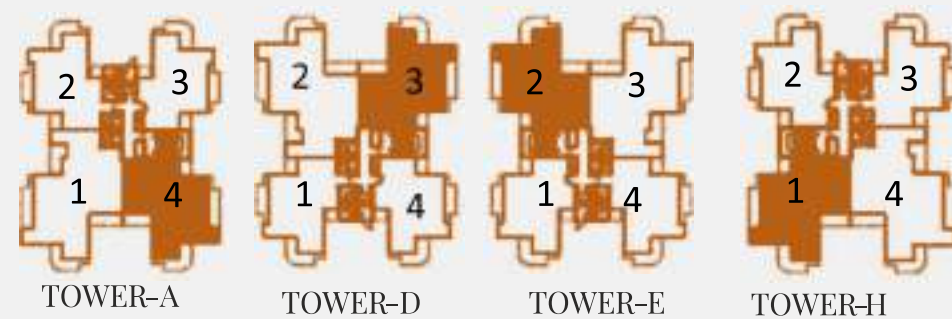


Note : Sizes In Feet/inches Are Approximate

# Unit Plan: 1895

TOWER-'A,D,E,H  
 UNIT PLAN- TYPE-2  
 3 BHK+ 3T +STUDY

<b>Particulars</b>	:	<b>Sq.ft.</b>
Balcony Area	:	251.350 sq.ft.
Saleable Area	:	1895 sq.ft.
Unit Built up Area	:	1423.32 sq.ft.
Rera Carpet Area	:	1109.74 sq.ft.

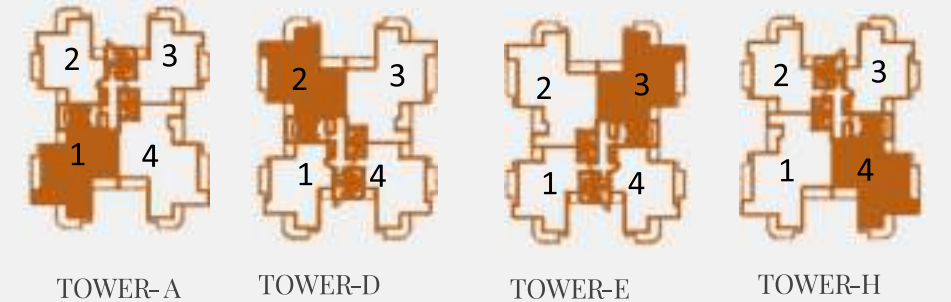


Note : Sizes In Feet/inches Are Approximate

# Unit Plan: 2450

TOWER-A,D,E,H  
 UNIT PLAN - TYPE -1  
 4 BHK+ 5T +SERVANT

<b>Particulars</b>	:	<b>Sq.ft.</b>
Balcony Area	:	303.55 sq.ft.
Saleable Area	:	2450 sq.ft.
Unit Built up Area	:	1828.57 sq.ft.
Rera Carpet Area	:	1445.08 sq.ft.





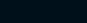
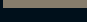
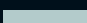

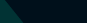

Note : Sizes In Feet/inches Are Approximate

# Landscape Plan

## LEGEND: LANDSCAPE ELEMENTS (RESIDENTIAL)

- |                            |                     |
|----------------------------|---------------------|
| A. ENTRY PLAZA             | N. GAZEBO           |
| B. EXIT PLAZA              | O. OPEN GYM         |
| C. ENTRANCE LOBBY/DROP-OFF | P. JOGGING TRECK    |
| D. SENIOR CITIZEN ZONE     | Q. CYCLING TRACK    |
| E. SWIMMING POOL           | R. AROMA GARDEN     |
| F. KID'S POOL              | S. HERBAL GARDEN    |
| G. COMMERCIAL PLAZA        | T. REFLEXOLOGY PATH |
| H. PARTY LAWN              | U. HEALING GARDEN   |
| I. BADMINTON COURT         | V. SEATING GARDEN   |
| J. HALF BASKETBALL COURT   | W. WATER BODY       |
| K. KID'S PLAY AREA         | X. RAMP             |
| L. MEDITATION AREA         |                     |
| M. SKATING RING            |                     |

### UNIT TYPES

- |                   |   |                    |
|-------------------|---|--------------------|
| Type - 1 2450     |  | Tower A - Amber    |
| Type - 2 1895     |  | Tower B - Beryl    |
| Type - 3 1600 (A) |  | Tower C - Coral    |
| Type - 4 1600 (B) |  | Tower D - Diamond  |
| Type - 5 1580     |  | Tower E - Emerald  |
| Type - 6 1355     |  | Tower F - Fluorite |
|                   |  | Tower G - Garnet   |
|                   |  | Tower H - Heliodor |



\*Conditions apply. **DISCLAIMER** : All buildings, information, specification, etc. are tentative and subject to variation and modification by the company or the competent authorities sanctioning such plans. Images are for representative purpose only. \*1 sq. mtr. is equal to 10.76 sq. ft. Note: The details of approvals may be seen in our office.